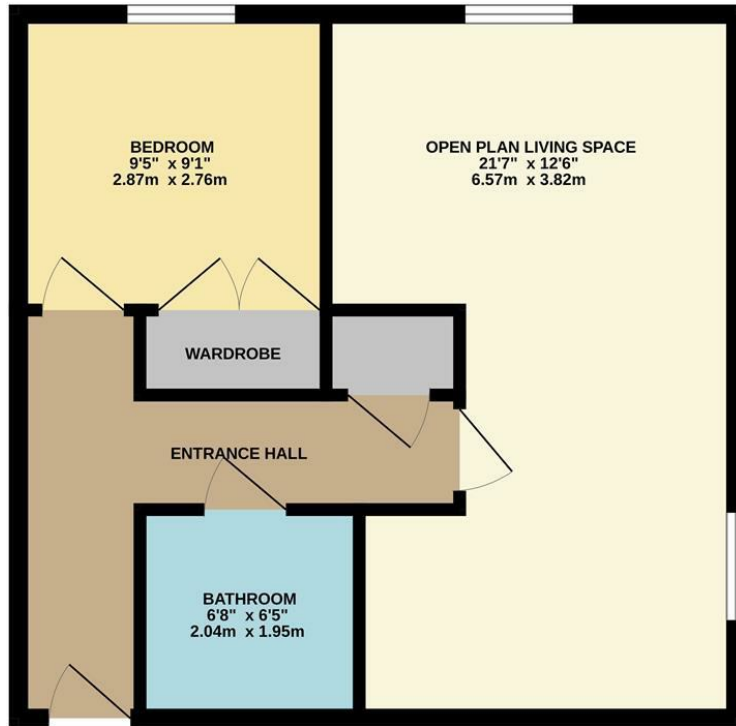


Flat 9, 22 Coten End, Warwick
£140,000

charlesrose.



TOTAL FLOOR AREA: 473 sq.ft. (43.9 sq.m.) approx.
Whilst every attempt has been made to ensure the accuracy of the floorplan contained herein, measurements of doors, windows, rooms and any other items are approximate and no responsibility is taken for any error, omission or mis-statement. This plan is for illustrative purposes only and should be used as such by any prospective purchaser. The services, systems and appliances shown have not been tested and no guarantee as to their operability or efficiency can be given.
Made with Metropix ©2023

This stylishly presented first floor apartment is ideally situated for the town centre, train station and St Nicholas Park. The accommodation comprises entrance hall, open plan living space, double bedroom and bathroom. It further benefits from allocated parking. No chain

charlesrose.

- 01926 832411
- info@charlesroseproperties.co.uk
- www.charlesroseproperties.co.uk

