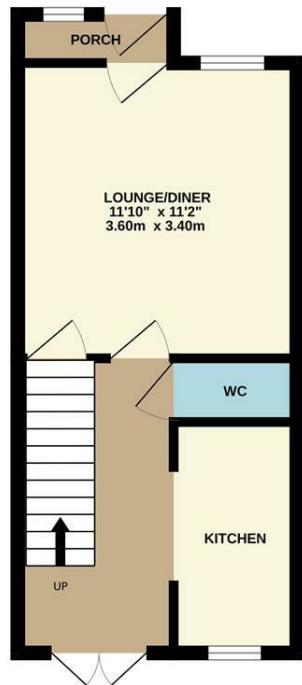


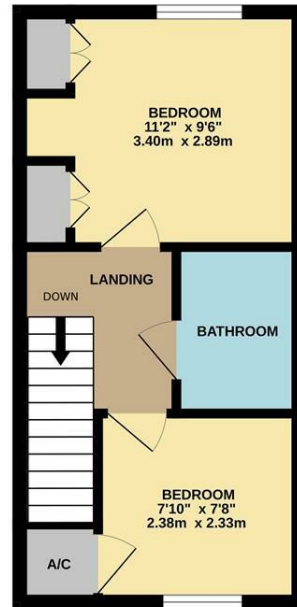
1 West End Court, Crompton
Offers Over £200,000

charlesrose.

GROUND FLOOR
278 sq.ft. (25.9 sq.m.) approx.



1ST FLOOR
266 sq.ft. (24.7 sq.m.) approx.



TOTAL FLOOR AREA: 545 sq.ft. (50.6 sq.m.) approx.
Whilst every attempt has been made to ensure the accuracy of the floorplan contained here, measurements of doors, windows, rooms and any other items are approximate and no responsibility is taken for any error, omission or mis-statement. This plan is for illustrative purposes only and should be used as such by any prospective purchaser. The services, systems and appliances shown have not been listed and no guarantee as to their operability or efficiency can be given.
Made with Metropix ©2023



A lovely two bed terraced property located in the heart of Warwick Town Centre. Situated on Crompton Street, the property has been improved and will suit first time buyers, down sizers and investors alike.

Comprising porch, loungediner, kitchen and downstairs w.c. Upstairs are two bedrooms, one of which is a generous double, and a bathroom. Outside is a designated parking space and a communal garden. It should be noted it is situated only 0.8 mile walk to Warwick train station and only two minutes walk to Warwick's array of shops, restaurants and bars.

Opportunities to purchase a property at this price range in the town centre are rare and therefore interest is expected to be extremely high. It is advised to book viewings early to avoid disappointment. Call us today.

charlesrose.

- 01926 832411
- info@charlesroseproperties.co.uk
- www.charlesroseproperties.co.uk

