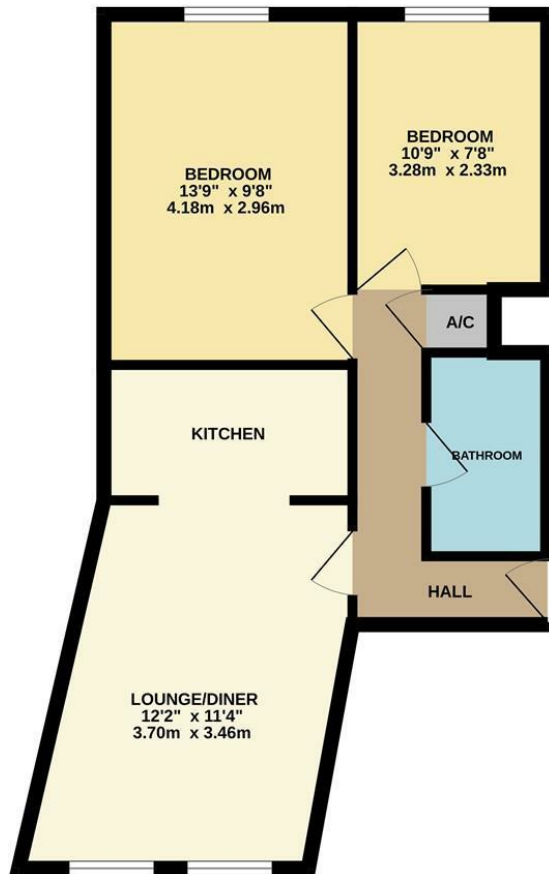


SECOND FLOOR  
517 sq.ft. (48.0 sq.m.) approx.



TOTAL FLOOR AREA : 517 sq.ft. (48.0 sq.m.) approx.  
Whilst every attempt has been made to ensure the accuracy of the floorplan contained here, measurements of doors, windows, rooms and any other items are approximate and no responsibility is taken for any error, omission or mis-statement. This plan is for illustrative purposes only and should be used as such by any prospective purchaser. The services, systems and appliances shown have not been tested and no guarantee as to their operability or efficiency can be given.  
Made with Metropix ©2024

22 West End Court Crompton  
Offers Over £170,000

charlesrose.



A beautifully presented two bedroom, third floor apartment in the heart of Warwick Town Centre. Comprising an entrance hall, loungediner leading to the stylish kitchen, 2 bedrooms and a shower room, the property has been kept in immaculate condition and will suit first time buyers and investors alike. It should be noted it is situated only 0.8 mile walk to Warwick train station and even closer to Warwick's impressive array of shops, restaurants and bars. The apartment also benefits from a lift and a parking space.

Opportunities to purchase a property at this price range in the town centre are rare and therefore interest is expected to be high. It is advised to book viewings early to avoid disappointment. Call us today.

Council Tax Band - C - £1,906 per year

charlesrose.

- 01926 832411
- info@charlesroseproperties.co.uk
- www.charlesroseproperties.co.uk



