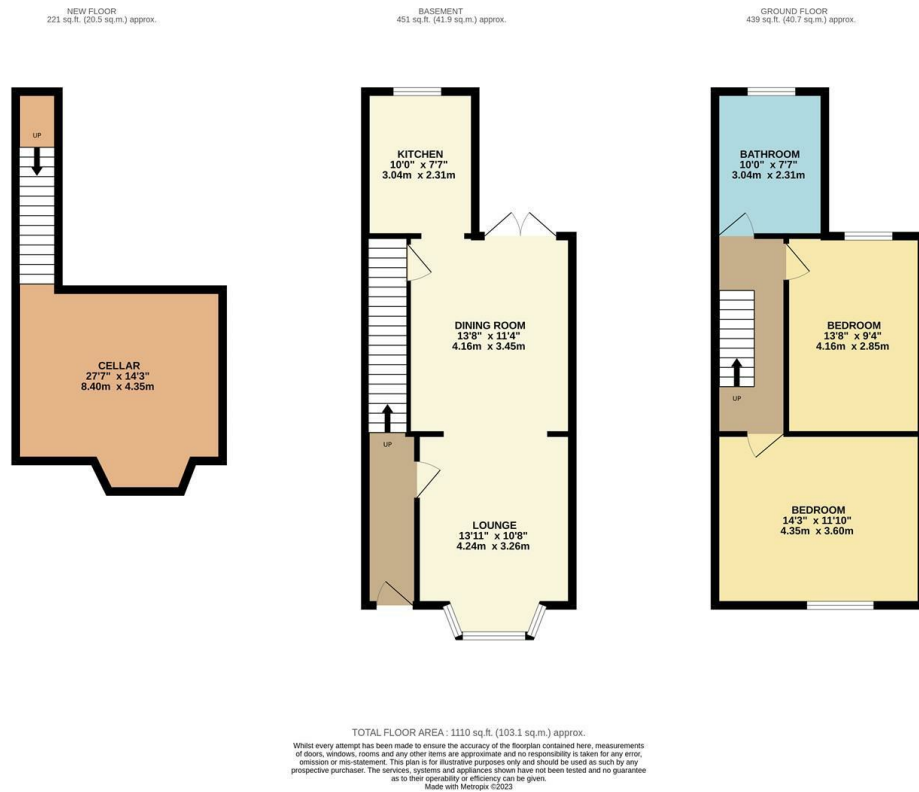


55 Avon Street, Warwick
£315,000

charlesrose.



This attractive Victorian terrace has undergone much improvement under the current owner and is stylishly presented throughout. Close to St Nicholas Park & town centre, it is ideally situated for Coten End Primary School, Myton School and Warwick Train Station.

charlesrose.

- 01926 832411
- info@charlesroseproperties.co.uk
- www.charlesroseproperties.co.uk

