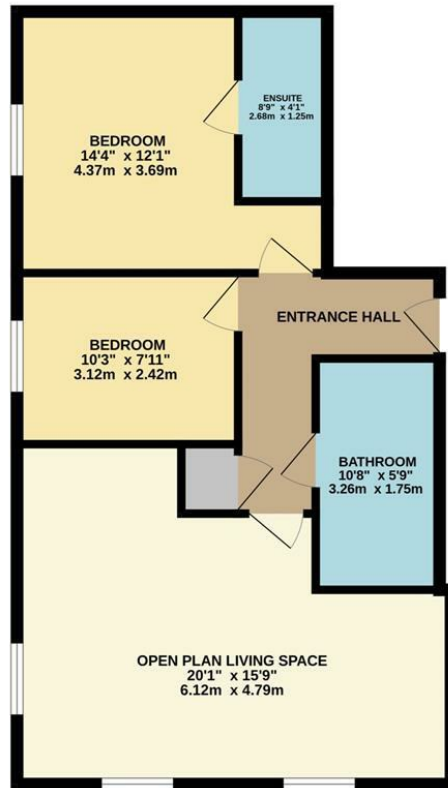


GROUND FLOOR  
640 sq.ft. (59.5 sq.m.) approx.



TOTAL FLOOR AREA: 640 sq.ft. (59.5 sq.m.) approx.  
Whilst every attempt has been made to ensure the accuracy of the floorplan contained here, measurements of doors, windows, rooms and any other items are approximate and no responsibility is taken for any error, omission or mis-statement. This plan is for illustrative purposes only and should be used as such by any prospective purchaser. The services, systems and appliances shown have not been tested and no guarantee as to their operability or efficiency can be given.  
Made with Metropix ©2023

10 George House George House,  
£280,000

charlesrose.



A superb third floor apartment situated on The Parade overlooking Christchurch Gardens. The accommodation comprises entrance hall, open plan living space, two double bedrooms, ensuite and bathroom. The property further benefits from a communal lift and is being sold with no onward chain.

Service charge/ground rent approx £232 per month

Lease - 106 years left

Council Tax - Band A

charlesrose.

- 01926 832411
- info@charlesroseproperties.co.uk
- www.charlesroseproperties.co.uk

