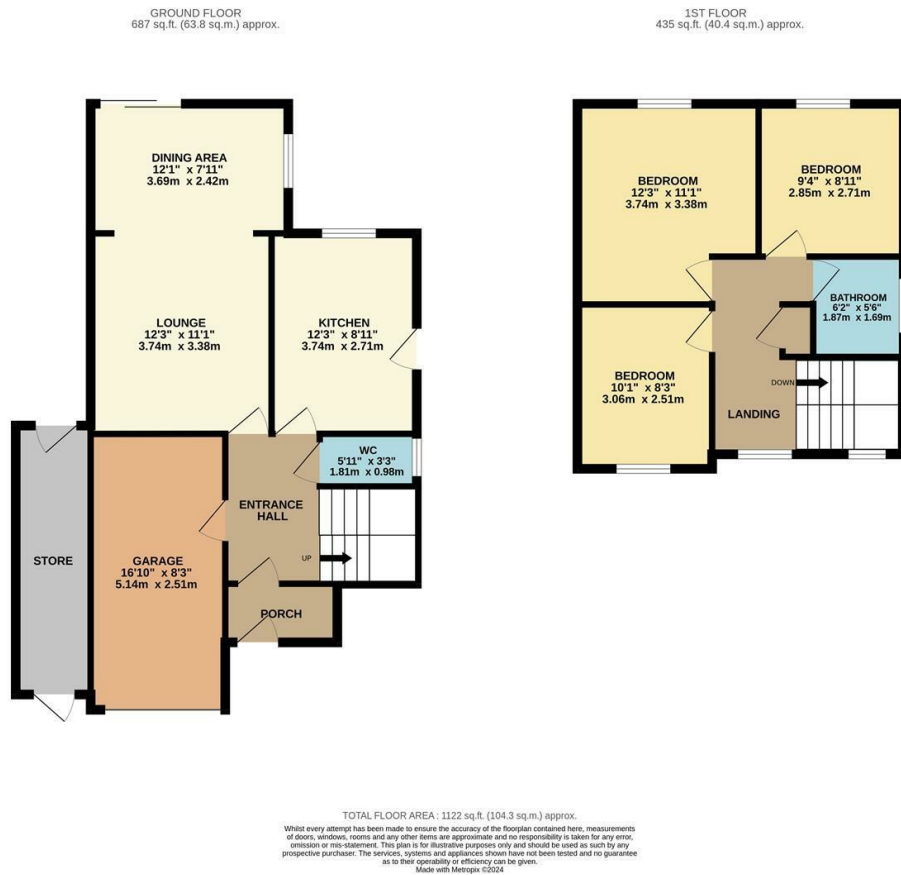


25 Cherry Lane, Warwick  
£365,000

charlesrose.



An immaculately presented three double bedroom family home, situated in the village of Hampton Magna. The accommodation comprises porch, entrance hall, lounge dining room, kitchen, downstairs W.C., three bedrooms and bathroom. The property further benefits from garage, driveway and an attractive rear garden.

charlesrose.

- 01926 832411
- info@charlesroseproperties.co.uk
- www.charlesroseproperties.co.uk

