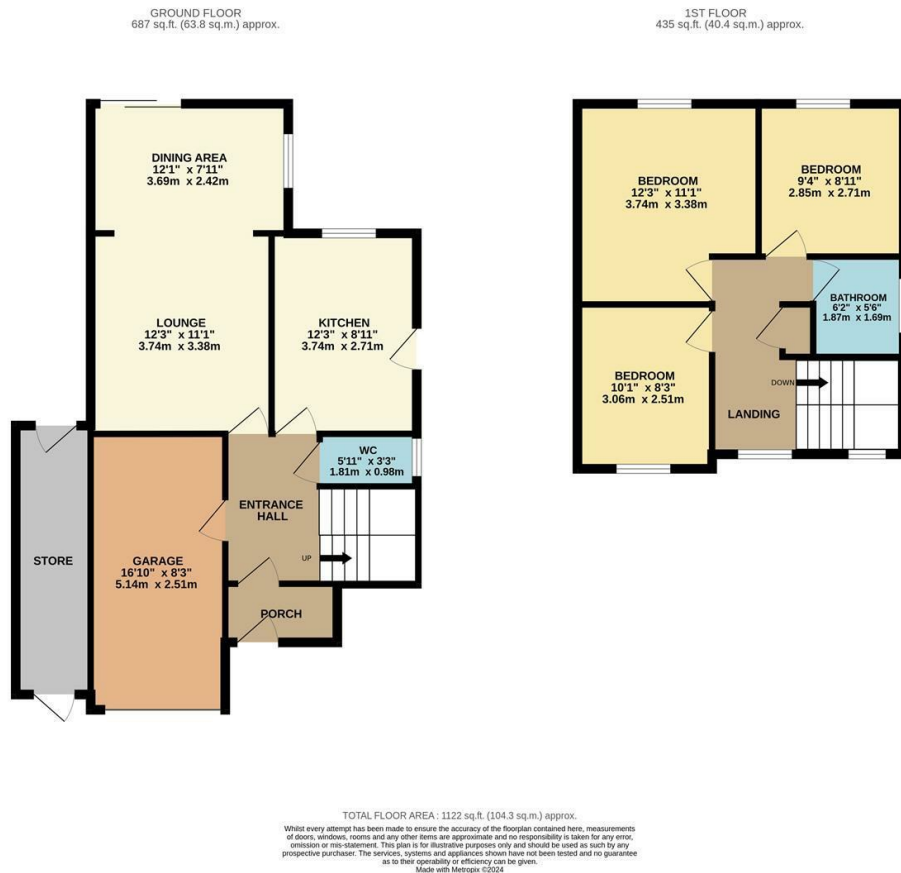


25 Cherry Lane, Warwick
Offers Over £350,000

charlesrose.



An immaculately presented three double bedroom family home, situated in the sought after village of Hampton Magna. Having undergone extensions the ground floor now offers spacious accommodation with the reception hallway giving way to the breakfast kitchen and large open plan living and dining room with doors leading out to the gardens. The first floor offers the three bedrooms and bathroom. The property further benefits from a driveway and garage and an attractive private rear garden.

charlesrose.

- 01926 832411
- info@charlesroseproperties.co.uk
- www.charlesroseproperties.co.uk

