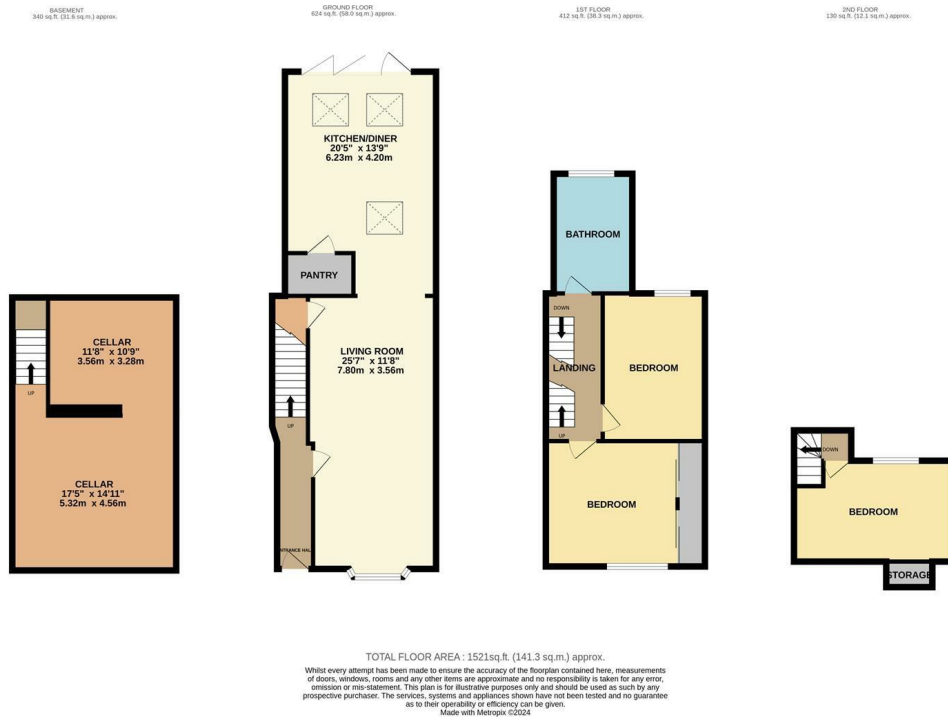


150 Leam Terrace, Leamington Spa  
Offers Over £500,000

charlesrose.



An exceptionally presented, 3 bedroomed, mid terraced town house, in a highly sought after street of Leamington Spa. Located on Leam Terrace and only a short walk from The Parade and the town's train station, this stunning character property has been modernised to a great standard, and offers flexible living accommodation to those looking for town centre convenience. Comprising an entrance hall, living room with bay window, leading through to a stunning open plan kitchen-diner, with bifold doors opening to courtyard garden, absolutely ideal for entertaining. Upstairs on the first floor are two double bedrooms and a beautiful bathroom, with a roll top bath and separate shower. On the second floor is a loft conversion with full building regulations and eave storage. There is also a cellar currently being used for storage.

Only 0.8 mile walk to Leamington's Parade with its array of shops, restaurants, pubs and bars makes this family home home is ideally located for those who enjoy town living. Additionally, being only a 0.9 mile walk to Leamington Train Station, with easy access to London and Birmingham, it can also be classed as a commuter's residence. For these reasons alone we are expecting a good deal of interest, it is therefore advised you phone early to book your own appointment, to avoid disappointment. Call us today.

Council Tax Band - C - £1,906 per year

charlesrose.

- 01926 832411
- [info@charlesroseproperties.co.uk](mailto:info@charlesroseproperties.co.uk)
- [www.charlesroseproperties.co.uk](http://www.charlesroseproperties.co.uk)



