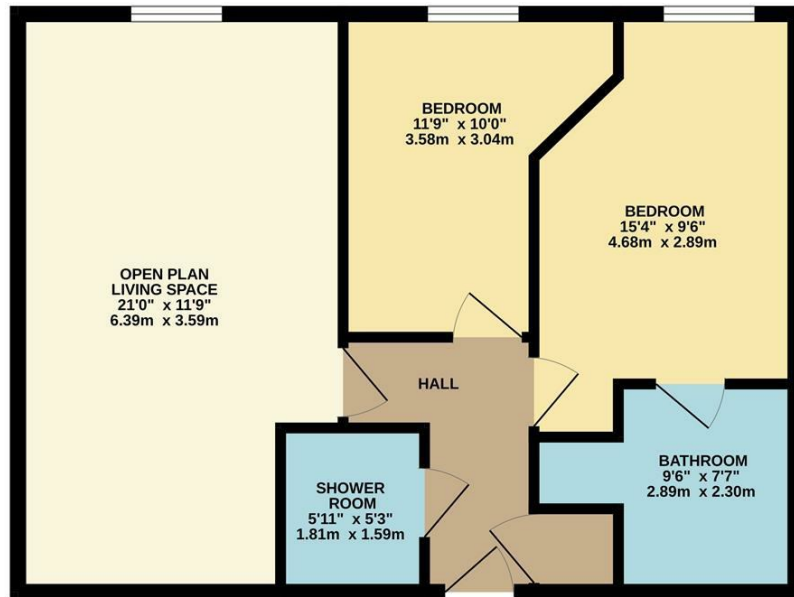


Apartment 4, 43 Bedford

£200,000

charlesrose.

GROUND FLOOR  
592 sq.ft. (55.0 sq.m.) approx.



TOTAL FLOOR AREA: 592 sq.ft. (55.0 sq.m.) approx.  
Whilst every attempt has been made to ensure the accuracy of the floorplan contained here, measurements of doors, windows, rooms and any other items are approximate and no responsibility is taken for any error, omission or mis-statement. This plan is for illustrative purposes only and should be used as such by any prospective purchaser. The services, systems and appliances shown have not been tested and no guarantee as to their operability or efficiency can be given.  
Made with Metropix ©2024



This town centre apartment is stylishly presented throughout. The accommodation comprises entrance hall, open plan living space, main bedroom with ensuite bathroom including a separate shower cubicle, second double bedroom and a shower room. The building benefits from a communal lift and is located with a 0.5 mile walk of the train station. The property would make an ideal first time buy. Or for buy to let investors we'd anticipate achieving a rent of £1,350 PCM which would represent net yield of 6.45%. The property is being sold with no onward chain.

charlesrose.

- 01926 832411
- info@charlesroseproperties.co.uk
- www.charlesroseproperties.co.uk

