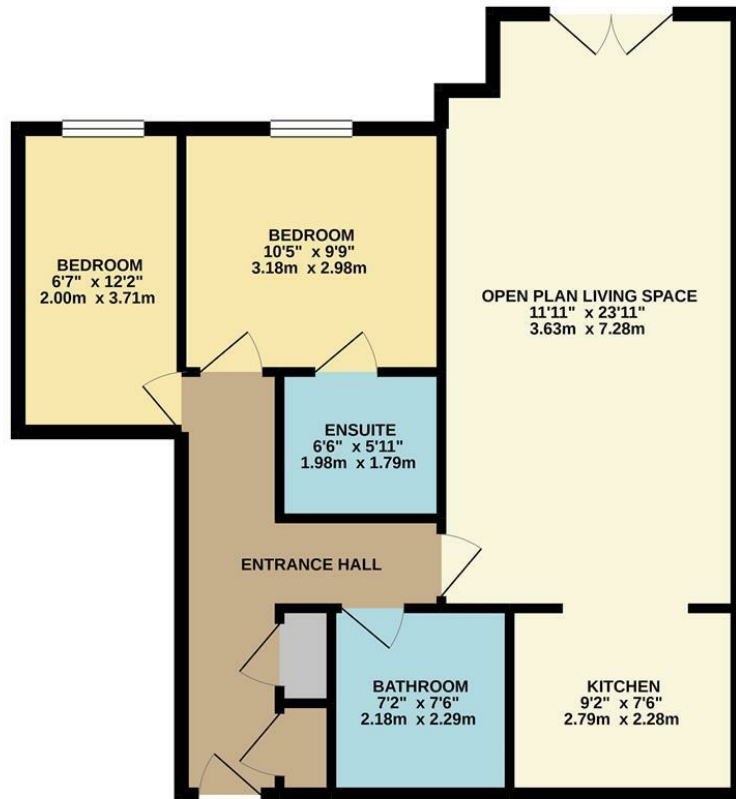


GROUND FLOOR  
727 sq.ft. (67.5 sq.m.) approx.



TOTAL FLOOR AREA : 727 sq ft. (67.5 sq.m.) approx.  
Whilst every attempt has been made to ensure the accuracy of the floorplan contained herein, measurements of doors, windows, rooms and any other items are approximate and no responsibility is taken for any error, omission or mis-statement. This plan is for illustrative purposes only and should be used as such by any prospective purchaser. The services, systems and appliances shown have not been tested and no guarantee as to their operability or efficiency can be given.  
Made with Metropix ©2020

28 Birch Meadow Close, Warwick  
£1,000 Per Month

charlesrose.



An immaculately presented second floor apartment situated within an attractive development in Warwick town centre. The accommodation comprises entrance hall, open plan living space with Juliet balcony, kitchen, bathroom, two bedrooms with the master having an en-suite. The property further benefits from a lift and secure underground parking space.

No pets  
Minimum 12 month tenancy required  
No students/ sharers

charlesrose.

- 01926 832411
- info@charlesroseproperties.co.uk
- www.charlesroseproperties.co.uk

