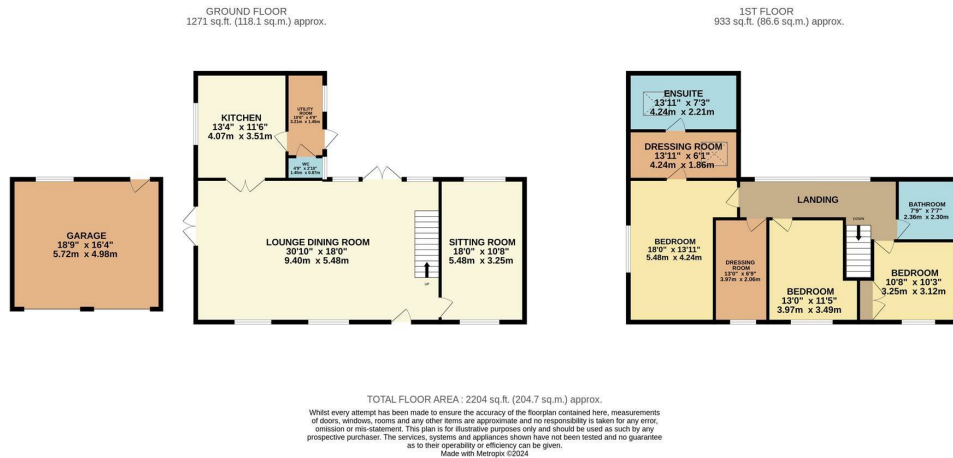


The High Barn Gaydon

£2,500 Per Month

charlesrose.



This fabulous barn conversion called 'High Barn' is surrounded by paddocks and open countryside. This semi-detached property boasts a host of character features including exposed beams and brick detailing and an expansive brick fireplace whilst mixed seamlessly and complemented by modern additions including a handsome wooden staircase and matching doors, large timber framed windows and stonetailed floors.

Offering spacious accommodation including a large open plan living and dining room, a separate study/snug, a well-appointed kitchen and a utility room with adjoining WC. Upstairs there is a principal bedroom leading through a vanity/dressing area and a stylish en suite shower room, two further generous double bedrooms and a family bathroom, plus a fitted dressing room/bedroom four. The property is set on the edge of a courtyard, accessed through an archway, with parking to the front on a shared courtyard. Adjacent to the house there is a detached double garage which also has access from the rear. The rear garden is enclosed with hedge and fenced boundaries giving a feeling of privacy. A decked terrace adjoins the house where there is a hot tub and ample space for summer entertaining. The rest of the garden is level, laid to lawn and also features a central patio.

charlesrose.

- 01926 832411
- info@charlesroseproperties.co.uk
- www.charlesroseproperties.co.uk

