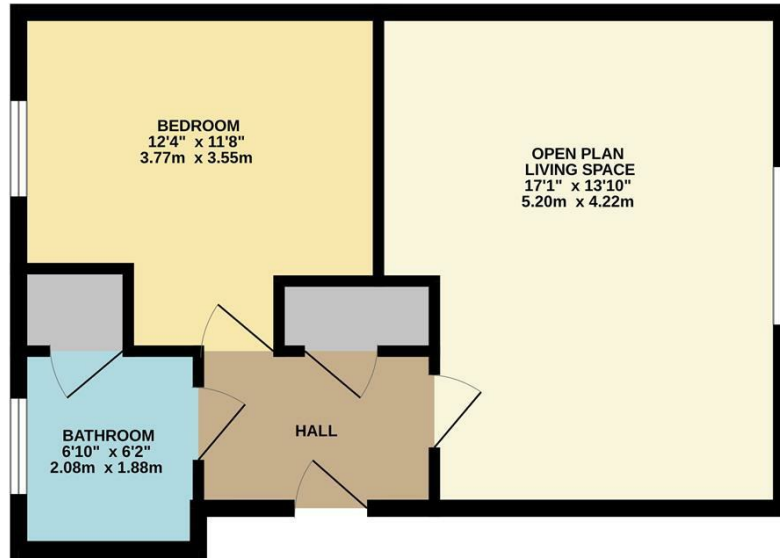


91 Ropeway, Southam
Guide Price £190,000

charlesrose.

GROUND FLOOR
456 sq.ft. (42.4 sq.m.) approx.



TOTAL FLOOR AREA: 456 sq.ft. (42.4 sq.m.) approx.
Whilst every attempt has been made to ensure the accuracy of the floorplan contained here, measurements of doors, windows, rooms and any other items are approximate and no responsibility is taken for any error, omission or mis-statement. This plan is for illustrative purposes only and should be used as such by any prospective purchaser. The services, systems and appliances shown have not been tested and no guarantee as to their operability or efficiency can be given.
Made with Metropix ©2024



This charming first floor apartment was constructed only two years ago by renowned builders David Wilson in this convenient and desirable location within the picturesque village of Bishops Itchington. Boasting comfort, quality and style, this modern apartment offers the perfect turn key property for any prospective buyer. Positioned in this quiet location yet close to a host of the local amenities and also access to many major local towns sits this beautiful apartment. Upon entry you are greeted with the stunning finish. The spacious entrance hallway with plenty of storage on offer gives way to a well proportioned open plan living, dining and modern kitchen finished with an array of integrated appliances. There is also a spacious double bedroom and stunning modern bathroom suite on offer. Externally the property benefits with allocated parking and further benefits with an extremely long lease and affordable service charges.

charlesrose.

- 01926 832411
- info@charlesroseproperties.co.uk
- www.charlesroseproperties.co.uk

